

\$335,000 - 9848 77 Avenue, Edmonton

MLS® #E4463216

\$335,000

0 Bedroom, 0.00 Bathroom,
Single Family on 0.00 Acres

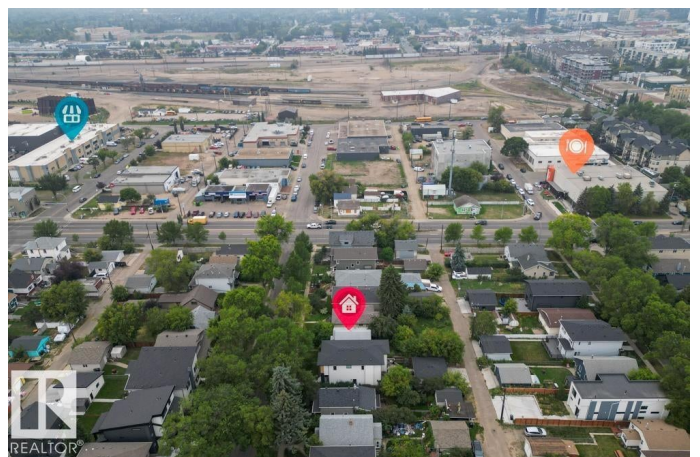
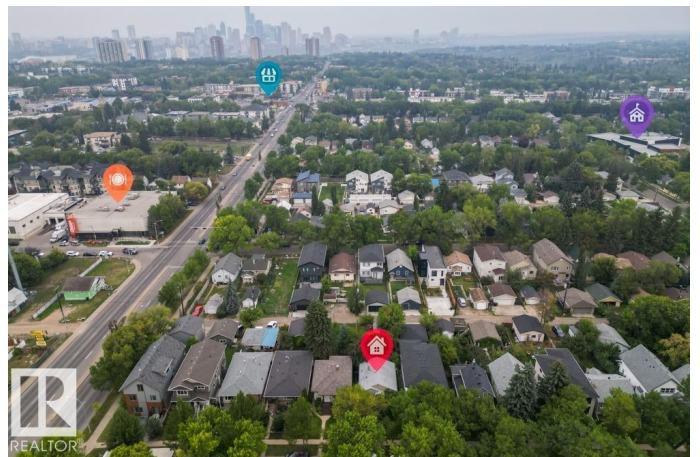
Ritchie, Edmonton, AB

PRIME INFILL OPPORTUNITY IN RITCHIE!

This vacant lot offers the perfect chance to **BUILD YOUR DREAM HOME** in one of Edmonton's most sought-after communities. Measuring approximately 33' x 132', the property provides ample space for a spacious single-family residence or potential front-to-back duplex development (subject to city approval). Surrounded by CHARACTER HOMES, modern infills, and mature tree-lined streets, this location combines charm with convenience. Enjoy walking distance to the vibrant RITCHIE MARKET, Mill Creek Ravine, and schools, with Whyte Avenue, Downtown, and the University of Alberta just minutes away. Whether you're a BUILDER, INVESTOR, or future homeowner, this lot presents endless possibilities in a HIGHLY DESIRABLE location. Don't miss your chance to make your vision a reality in Ritchie!

Essential Information

MLS® #	E4463216
Price	\$335,000
Bathrooms	0.00
Acres	0.00
Type	Single Family
Sub-Type	Vacant Lot/Land



Status Active

Community Information

Address 9848 77 Avenue
Area Edmonton
Subdivision Ritchie
City Edmonton
County ALBERTA
Province AB
Postal Code T6E 1M4

Exterior

Exterior Features Back Lane, Flat Site, Playground Nearby, Public Transportation, Schools, Shopping Nearby

Additional Information

Date Listed October 23rd, 2025
Days on Market 13
Zoning Zone 17

DATA IS DEEMED RELIABLE BUT IS NOT GUARANTEED ACCURATE BY THE REALTORS® ASSOCIATION OF EDMONTON. COPYRIGHT 2025 BY THE REALTORS® ASSOCIATION OF EDMONTON. ALL RIGHTS RESERVED. Trademarks are owned or controlled by the Canadian Real Estate Association (CREA) and identify real estate professionals who are members of CREA (REALTOR®, REALTORS®) and/or the quality of services they provide (MLS®, Multiple Listing Service®)

Listing information last updated on November 5th, 2025 at 2:17am MST