

# \$279,900 - 104 9707 105 Street, Edmonton

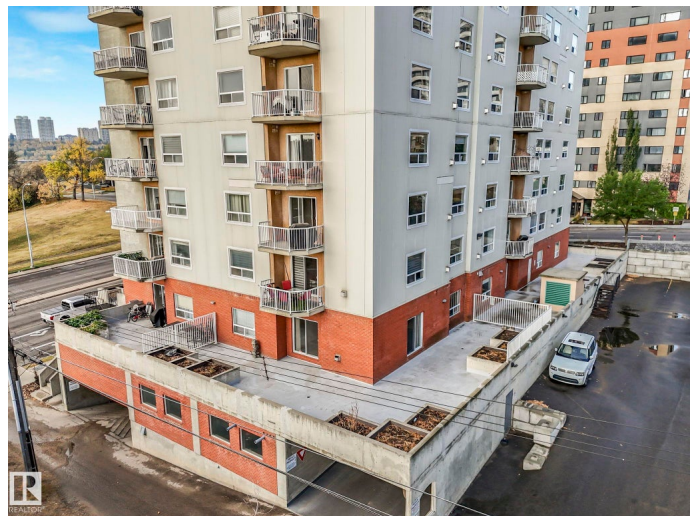
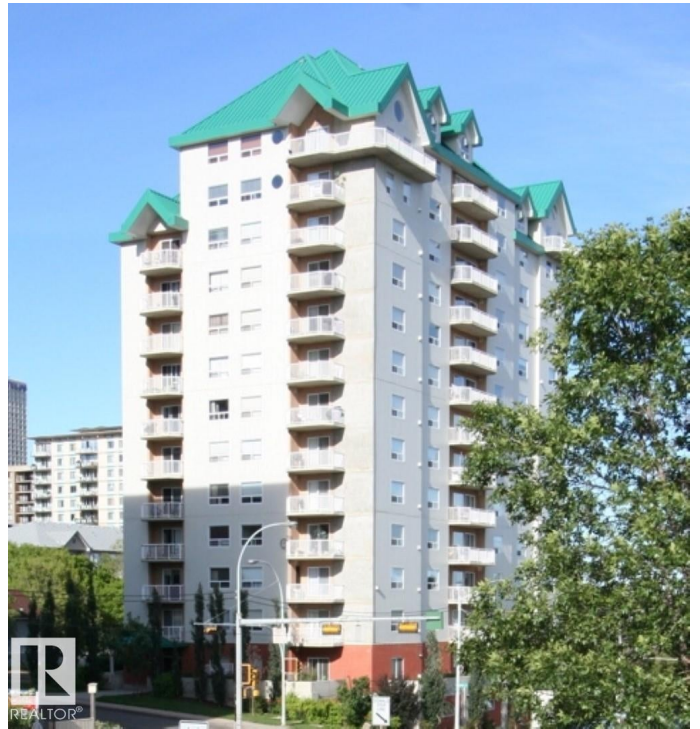
MLS® #E4460772

**\$279,900**

2 Bedroom, 2.00 Bathroom, 1,292 sqft  
Condo / Townhouse on 0.00 Acres

Downtown (Edmonton), Edmonton, AB

Also for sale 280K Stop right here and have a look. Formerly the projects show suite. A unique and very special property. 1220 sq ft 2 bedroom with 10' ceilings. Substantial upgrades including wide crown molding and 8" baseboards throughout. Chosen by the owner Trevor Dunn ( original project realtor ) during construction as the best unit in the building. The only unit in the building with the fireplace placed close to the dining room specially designed for high end ( 19" rack mount ) electronics in mind. Main level but great security ( well above grade level ) and with 6' fencing to the plaza. This is truly special, 1500 sq ft private use plaza deck featuring several raised garden planters for gardening or flower beds. Great location midway between downtown and the river. Underground heated parking right next to the elevator. Just now repainted complete with brand new wide prof vinyl plank floors.



Built in 2003

## Essential Information

MLS® #	E4460772
Price	\$279,900
Bedrooms	2
Bathrooms	2.00
Full Baths	2

Square Footage	1,292
Acres	0.00
Year Built	2003
Type	Condo / Townhouse
Sub-Type	Apartment High Rise
Style	Single Level Apartment
Status	Active

### **Community Information**

Address	104 9707 105 Street
Area	Edmonton
Subdivision	Downtown (Edmonton)
City	Edmonton
County	ALBERTA
Province	AB
Postal Code	T5K 2Y4

### **Amenities**

Amenities	Off Street Parking, Ceiling 10 ft., Closet Organizers, Deck, No Animal Home, No Smoking Home, Patio, Sprinkler System-Fire, Storage-In-Suite
Parking	Heated, Underground, See Remarks

### **Interior**

Interior Features	ensuite bathroom
Appliances	Dishwasher-Built-In, Dryer, Microwave Hood Fan, Refrigerator, Stove-Electric, Washer
Heating	Baseboard, Natural Gas
Fireplace	Yes
Fireplaces	Glass Door
# of Stories	13
Stories	1
Has Basement	Yes
Basement	None, No Basement

### **Exterior**

Exterior	Concrete, Composition
Exterior Features	Back Lane, Fenced, Golf Nearby, Paved Lane, Public Transportation, River Valley View, Schools, Shopping Nearby, See Remarks

Roof Metal  
Construction Concrete, Composition  
Foundation Concrete Perimeter

**Additional Information**

Date Listed October 3rd, 2025  
Days on Market 33  
Zoning Zone 12  
Condo Fee \$770



DATA IS DEEMED RELIABLE BUT IS NOT GUARANTEED ACCURATE BY THE REALTORS® ASSOCIATION OF EDMONTON. COPYRIGHT 2025 BY THE REALTORS® ASSOCIATION OF EDMONTON. ALL RIGHTS RESERVED. Trademarks are owned or controlled by the Canadian Real Estate Association (CREA) and identify real estate professionals who are members of CREA (REALTOR®, REALTORS®) and/or the quality of services they provide (MLS®, Multiple Listing Service®)

Listing information last updated on November 5th, 2025 at 9:47am MST