

\$380,000 - 13 Alderwood Crescent, Sherwood Park

MLS® #E4460005

\$380,000

4 Bedroom, 1.50 Bathroom, 1,191 sqft

Single Family on 0.00 Acres

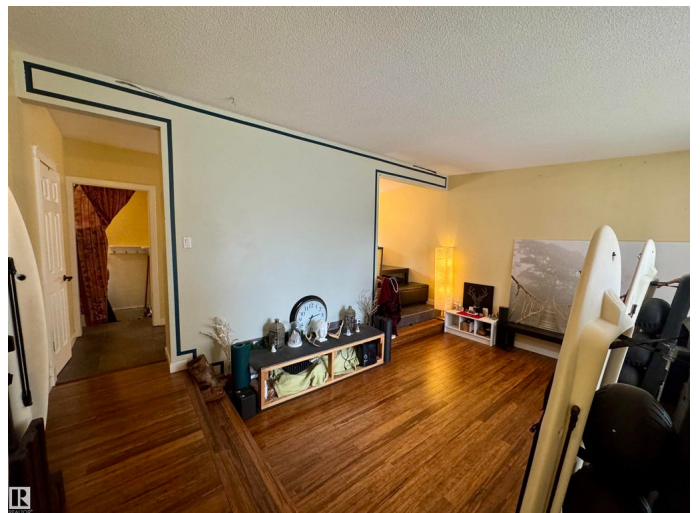
Maplewood (Sherwood Park), Sherwood Park, AB

Charming bungalow on a quiet crescent in Brentwood, Sherwood Park. This well-maintained home features 3 bedrooms, 1.5 baths, bamboo hardwood, tile kitchen floors, and updated windows. The bright kitchen has patio doors leading to a large, private yard with mature trees, a moveable gate for privacy, and a removable shed. The fully finished basement includes a den, workshop, and 4th bedroom. Upgrades include a ~12-year-old roof (30-year shingles), mid-efficiency furnace with new blower motor (1.5 yrs ago), high-capacity hot water tank (5-6 yrs), and updated kitchen cabinetry. Located near parks, schools, trails, shopping, and more. All standard appliances included. A great opportunity in a family-friendly neighborhood.

Built in 1971

Essential Information

MLS® #	E4460005
Price	\$380,000
Lease Rate	\$14
Bedrooms	4
Bathrooms	1.50
Full Baths	1
Half Baths	1



Square Footage	1,191
Acres	0.00
Year Built	1971
Type	Single Family
Sub-Type	Detached Single Family
Style	Bungalow
Status	Active

Community Information

Address	13 Alderwood Crescent
Area	Sherwood Park
Subdivision	Maplewood (Sherwood Park)
City	Sherwood Park
County	ALBERTA
Province	AB
Postal Code	T8A 0K4

Amenities

Amenities	See Remarks
Parking	Front Drive Access

Interior

Interior Features	ensuite bathroom
Appliances	Dishwasher-Built-In, Dryer, Refrigerator, Storage Shed, Stove-Electric, Washer
Heating	Forced Air-1, Natural Gas
Stories	2
Has Basement	Yes
Basement	Full, Finished

Exterior

Exterior	Wood, Vinyl
Exterior Features	Fenced, Flat Site
Roof	Asphalt Shingles
Construction	Wood, Vinyl
Foundation	Concrete Perimeter

Additional Information

Date Listed	September 29th, 2025
-------------	----------------------

Days on Market 37

Zoning Zone 25

DATA IS DEEMED RELIABLE BUT IS NOT GUARANTEED ACCURATE BY THE REALTORS® ASSOCIATION OF EDMONTON. COPYRIGHT 2025 BY THE REALTORS® ASSOCIATION OF EDMONTON. ALL RIGHTS RESERVED. Trademarks are owned or controlled by the Canadian Real Estate Association (CREA) and identify real estate professionals who are members of CREA (REALTOR®, REALTORS®) and/or the quality of services they provide (MLS®, Multiple Listing Service®)

Listing information last updated on November 5th, 2025 at 9:47am MST