

\$619,900 - 11116 69 Street, Edmonton

MLS® #E4457622

\$619,900

4 Bedroom, 2.00 Bathroom, 1,178 sqft

Single Family on 0.00 Acres

Bellevue, Edmonton, AB

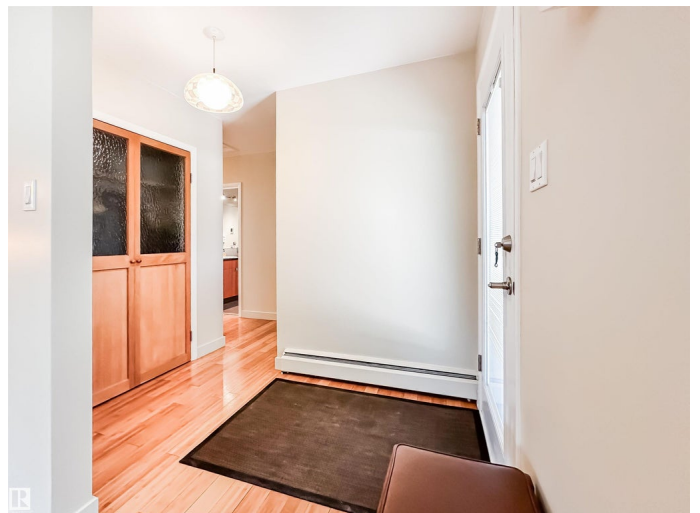
UPDATED BUNGALOW IN BELLEVUE-HIGHLANDS NEAR THE RIVER VALLEY! Beautifully maintained 1,178 sqft, 4-bed, 2-bath bungalow sits on a quiet street in this sought-after area, one block to Ada Boulevard's River Valley views, and walkable to Kind Ice Cream, Fox Burger, Bodega, Highlands Golf Course, Borden Park Natural Swimming Pool, and Concordia University. Inside, warm bamboo flooring runs through a bright, open layout with an updated kitchen with modern cabinetry, tile backsplash, stainless steel appliances, and generous prep space. The dining area & living room offer space to gather, plus spacious primary bedroom with dual closets. A second bedroom & updated 4pc bath with heated tile complete the main floor. The fully finished basement adds two more bedrooms, a family room, 3pc bath, den, and laundry/storage. Brand new hot water heating - quiet & low dust. Fenced west backyard has mature landscaping with a crabapple tree & space for a garden or play structure. Oversize double detached garage.

Built in 1963

Essential Information

MLS® # E4457622

Price \$619,900



Bedrooms	4
Bathrooms	2.00
Full Baths	2
Square Footage	1,178
Acres	0.00
Year Built	1963
Type	Single Family
Sub-Type	Detached Single Family
Style	Bungalow
Status	Active

Community Information

Address	11116 69 Street
Area	Edmonton
Subdivision	Bellevue
City	Edmonton
County	ALBERTA
Province	AB
Postal Code	T5B 1R4

Amenities

Amenities	Off Street Parking, Patio
Parking Spaces	4
Parking	Double Garage Detached

Interior

Appliances	Dishwasher-Built-In, Dryer, Garage Control, Garage Opener, Garburator, Microwave Hood Fan, Refrigerator, Stove-Electric, Washer, Window Coverings, See Remarks
Heating	Hot Water, Natural Gas
Stories	2
Has Basement	Yes
Basement	Full, Finished

Exterior

Exterior	Wood, Brick
Exterior Features	Back Lane, Fenced, Landscaped, Low Maintenance Landscape, Public Transportation, Schools, Shopping Nearby
Roof	Asphalt Shingles

Construction	Wood, Brick
Foundation	Concrete Perimeter

Additional Information

Date Listed	September 12th, 2025
Days on Market	2
Zoning	Zone 09

DATA IS DEEMED RELIABLE BUT IS NOT GUARANTEED ACCURATE BY THE REALTORS® ASSOCIATION OF EDMONTON. COPYRIGHT 2025 BY THE REALTORS® ASSOCIATION OF EDMONTON. ALL RIGHTS RESERVED.Trademarks are owned or controlled by the Canadian Real Estate Association (CREA) and identify real estate professionals who are members of CREA (REALTOR®, REALTORS®) and/or the quality of services they provide (MLS®, Multiple Listing Service®)

Listing information last updated on September 13th, 2025 at 8:17pm MDT