

\$129,900 - 1101 9725 106 Street, Edmonton

MLS® #E4451226

\$129,900

1 Bedroom, 1.00 Bathroom, 719 sqft

Condo / Townhouse on 0.00 Acres

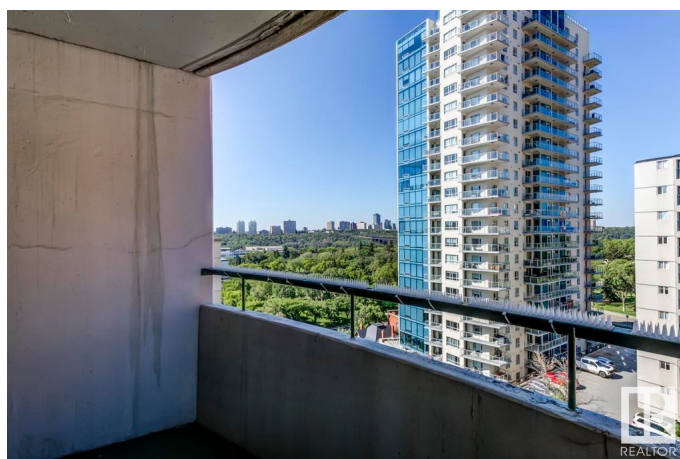
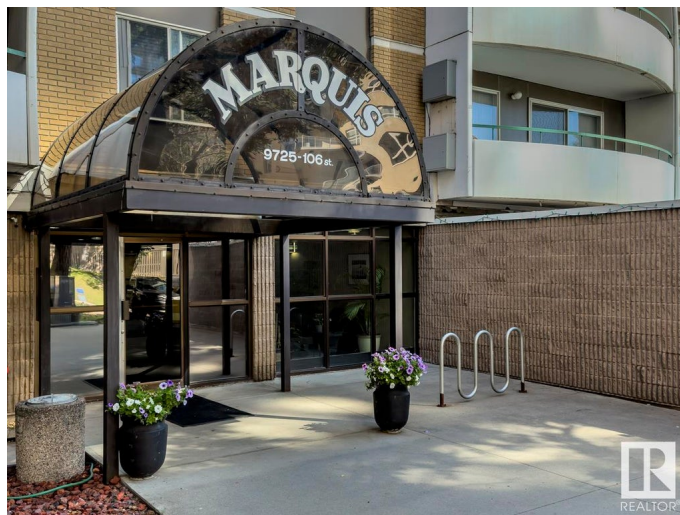
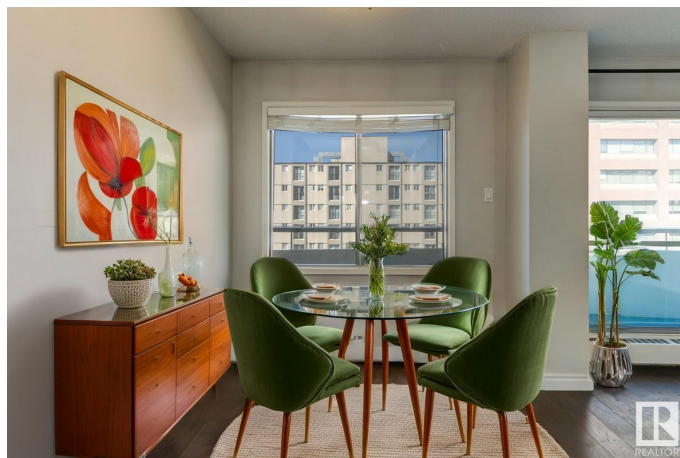
Downtown (Edmonton), Edmonton, AB

Spacious 1 bedroom, 1 bathroom condo with west-facing river valley views, maintenance-free living in the heart of downtown. Featuring new laminate flooring, an updated bathroom, and tons of storage, this bright unit offers unbeatable value with low condo fees that include heat, water, and electricity. Enjoy morning coffee or river views from your west facing private balcony, then head out for a walk—you're just steps from Edmonton's river valley trails, LRT, shops, and dining. The Marquis is a secure, concrete high-rise with fantastic amenities: fitness centre, sauna, billiards room, rooftop tennis and basketball courts, and laundry on every floor. Underground parking is included, and the building is professionally managed for peace of mind. Whether you're a first-time buyer, investor, or looking for downtown convenience without the downtown price tag, this is your chance to live smart and simply.

Built in 1970

Essential Information

MLS® #	E4451226
Price	\$129,900
Bedrooms	1
Bathrooms	1.00
Full Baths	1



Square Footage	719
Acres	0.00
Year Built	1970
Type	Condo / Townhouse
Sub-Type	Apartment High Rise
Style	Single Level Apartment
Status	Active

Community Information

Address	1101 9725 106 Street
Area	Edmonton
Subdivision	Downtown (Edmonton)
City	Edmonton
County	ALBERTA
Province	AB
Postal Code	T5K 1B5

Amenities

Amenities	Closet Organizers, Exercise Room, Intercom, Parking-Visitor, Patio, Sauna; Swirlpool; Steam, Storage-In-Suite, Tennis Courts
Parking Spaces	1
Parking	Underground

Interior

Appliances	Dishwasher-Built-In, Oven-Microwave, Refrigerator, Stove-Electric, Window Coverings
Heating	Hot Water, Natural Gas
# of Stories	16
Stories	1
Has Basement	Yes
Basement	None, No Basement

Exterior

Exterior	Concrete, Composition
Exterior Features	Golf Nearby, Park/Reserve, Public Transportation, River Valley View, River View, Shopping Nearby, View City
Roof	Tar & Gravel
Construction	Concrete, Composition
Foundation	Concrete Perimeter

Additional Information

Date Listed	August 5th, 2025
Days on Market	2
Zoning	Zone 12
Condo Fee	\$521

DATA IS DEEMED RELIABLE BUT IS NOT GUARANTEED ACCURATE BY THE REALTORS® ASSOCIATION OF EDMONTON. COPYRIGHT 2025 BY THE REALTORS® ASSOCIATION OF EDMONTON. ALL RIGHTS RESERVED.Trademarks are owned or controlled by the Canadian Real Estate Association (CREA) and identify real estate professionals who are members of CREA (REALTOR®, REALTORS®) and/or the quality of services they provide (MLS®, Multiple Listing Service®)

Listing information last updated on August 7th, 2025 at 2:17pm MDT