

## \$130,000 - 3 14125 82 Street, Edmonton

MLS® #E4450361

**\$130,000**

3 Bedroom, 1.00 Bathroom, 942 sqft

Condo / Townhouse on 0.00 Acres

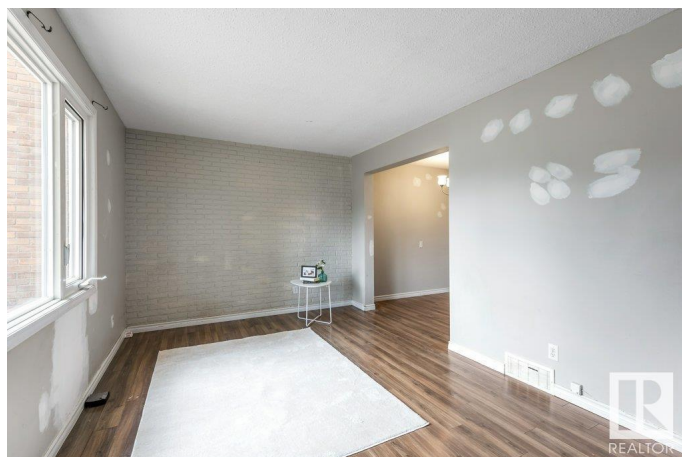
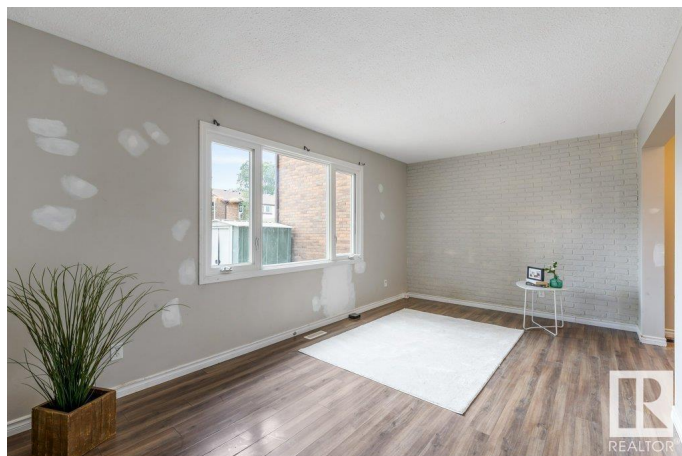
Kildare, Edmonton, AB

Investor alert or perfect for a first-time buyer ready to build sweat equity! This west-facing townhome offers strong potential with a solid layout, a low-maintenance front yard, and one parking stall conveniently located close to the unit. Inside, you'll find a bright entryway, a cozy family room with a white brick-style accent wall, and a separate dining area. The kitchen includes a pantry and functional layout, ready for your personal touch. Upstairs features 3 bedrooms—2 with built-in dressers and a spacious primary with a walk-in closet—plus a full 4-piece bathroom. The basement offers a large, usable, unfinished space that's untouched and ready for development, along with a separate laundry room with shelving and plenty of storage. Previous tenants left the home in need of some TLC, but the structure and space are there to create something great. Conveniently located near shopping, schools, and transit. A great opportunity you don't want to miss!

Built in 1971

### Essential Information

MLS® #	E4450361
Price	\$130,000
Bedrooms	3
Bathrooms	1.00



Full Baths	1
Square Footage	942
Acres	0.00
Year Built	1971
Type	Condo / Townhouse
Sub-Type	Townhouse
Style	2 Storey
Status	Active

### Community Information

Address	3 14125 82 Street
Area	Edmonton
Subdivision	Kildare
City	Edmonton
County	ALBERTA
Province	AB
Postal Code	T5E 2V7

### Amenities

Amenities	Parking-Visitor, Patio, See Remarks
Parking	Stall

### Interior

Appliances	Dryer, Refrigerator, Stove-Electric, Washer
Heating	Forced Air-1, Natural Gas
Stories	2
Has Basement	Yes
Basement	Full, Unfinished

### Exterior

Exterior	Wood, Stucco, Vinyl
Exterior Features	Fenced, Low Maintenance Landscape, Playground Nearby, Public Transportation, Schools, Shopping Nearby, See Remarks
Roof	Asphalt Shingles
Construction	Wood, Stucco, Vinyl
Foundation	Concrete Perimeter

### Additional Information

Date Listed	July 30th, 2025
-------------	-----------------

Days on Market	2
Zoning	Zone 02
Condo Fee	\$330

DATA IS DEEMED RELIABLE BUT IS NOT GUARANTEED ACCURATE BY THE REALTORS® ASSOCIATION OF EDMONTON. COPYRIGHT 2025 BY THE REALTORS® ASSOCIATION OF EDMONTON. ALL RIGHTS RESERVED. Trademarks are owned or controlled by the Canadian Real Estate Association (CREA) and identify real estate professionals who are members of CREA (REALTOR®, REALTORS®) and/or the quality of services they provide (MLS®, Multiple Listing Service®)

Listing information last updated on August 1st, 2025 at 7:47am MDT