

\$349,900 - 15820 100 Avenue, Edmonton

MLS® #E4442498

\$349,900

3 Bedroom, 2.00 Bathroom, 830 sqft

Single Family on 0.00 Acres

Glenwood (Edmonton), Edmonton, AB

Welcome to this 830 sqft 3 bedroom, 2 bathroom BUNGALOW with incredible potential for basement suite. Single Detached Garage & fully fenced yard with amazing garden space! Front entry with closet greets you to a very cozy living room adjacent to the kitchen and bedroom hallway. Main floor bathroom is freshly renovated and sandwiched between the two bedrooms. Rear entrance stairs to basement with laundry and utilities but beyond that a BRAND NEW renovation sporting luxury vinyl plank flooring with a future suite in mind. This includes rough ins for a kitchen, a good size bedroom, living room area (or another bedroom), and 3 piece bathroom. Home has all new windows, save 1, a new roof, and 100 amp service upgrade. Backyard is a great size with lovely vegetable garden and shed PLUS a single garage with large apron and tons of room for parking. Incredible opportunity for a first time buyer looking for a home with "good bones" and all the hard work done OR a great investment property.

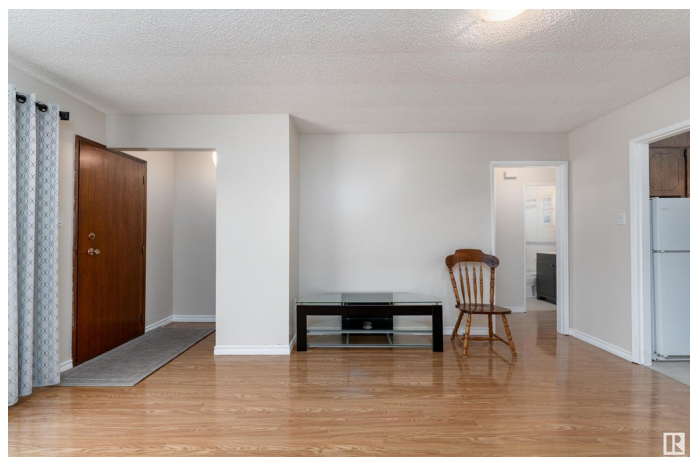
Built in 1961

Essential Information

MLS® # E4442498

Price \$349,900

Bedrooms 3



Bathrooms	2.00
Full Baths	2
Square Footage	830
Acres	0.00
Year Built	1961
Type	Single Family
Sub-Type	Detached Single Family
Style	Bungalow
Status	Active

Community Information

Address	15820 100 Avenue
Area	Edmonton
Subdivision	Glenwood (Edmonton)
City	Edmonton
County	ALBERTA
Province	AB
Postal Code	T5P 0L2

Amenities

Amenities	Detectors Smoke, Hot Water Natural Gas, No Animal Home, No Smoking Home, Vinyl Windows
Parking Spaces	4
Parking	Single Garage Detached
Is Waterfront	Yes

Interior

Appliances	Dryer, Refrigerator, Stove-Electric, Washer
Heating	Forced Air-1, Natural Gas
Stories	2
Has Suite	Yes
Has Basement	Yes
Basement	Full, Partially Finished

Exterior

Exterior	Wood, Stucco
Exterior Features	Backs Onto Lake, Fenced, Landscaped, Schools, Shopping Nearby, Vegetable Garden
Roof	Asphalt Shingles

Construction	Wood, Stucco
Foundation	Concrete Perimeter

Additional Information

Date Listed	June 14th, 2025
Days on Market	2
Zoning	Zone 22

DATA IS DEEMED RELIABLE BUT IS NOT GUARANTEED ACCURATE BY THE REALTORS® ASSOCIATION OF EDMONTON. COPYRIGHT 2025 BY THE REALTORS® ASSOCIATION OF EDMONTON. ALL RIGHTS RESERVED.Trademarks are owned or controlled by the Canadian Real Estate Association (CREA) and identify real estate professionals who are members of CREA (REALTOR®, REALTORS®) and/or the quality of services they provide (MLS®, Multiple Listing Service®)

Listing information last updated on June 15th, 2025 at 10:47pm MDT