

\$75,000 - 1012 10024 Jasper Ave Nw, Edmonton

MLS® #E4439809

\$75,000

1 Bedroom, 1.00 Bathroom, 427 sqft

Condo / Townhouse on 0.00 Acres

Downtown (Edmonton), Edmonton, AB

Property is sold "as is where is at time of the possession". No warranties or representation.

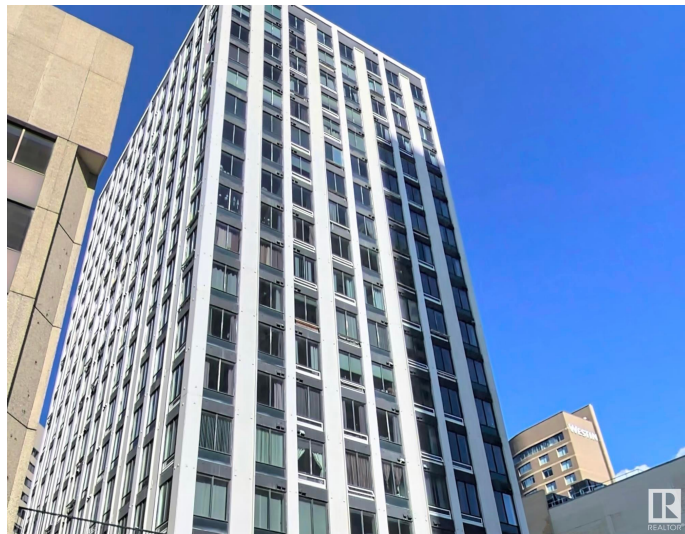
Built in 1968

Essential Information

| | |
|----------------|------------------------|
| MLS® # | E4439809 |
| Price | \$75,000 |
| Bedrooms | 1 |
| Bathrooms | 1.00 |
| Full Baths | 1 |
| Square Footage | 427 |
| Acres | 0.00 |
| Year Built | 1968 |
| Type | Condo / Townhouse |
| Sub-Type | Apartment High Rise |
| Style | Single Level Apartment |
| Status | Active |

Community Information

| | |
|-------------|--------------------------|
| Address | 1012 10024 Jasper Ave Nw |
| Area | Edmonton |
| Subdivision | Downtown (Edmonton) |
| City | Edmonton |
| County | ALBERTA |
| Province | AB |
| Postal Code | T5X 4R7 |



Amenities

| | |
|-----------|-------------|
| Amenities | See Remarks |
| Parking | See Remarks |

Interior

| | |
|--------------|-------------------|
| Appliances | See Remarks |
| Heating | See Remarks |
| # of Stories | 17 |
| Stories | 1 |
| Has Basement | Yes |
| Basement | None, No Basement |

Exterior

| | |
|-------------------|--|
| Exterior | Concrete |
| Exterior Features | Public Transportation, Shopping Nearby, View City, View Downtown |
| Roof | Tar & Gravel |
| Construction | Concrete |
| Foundation | Concrete Perimeter |

Additional Information

| | |
|----------------|----------------|
| Date Listed | June 1st, 2025 |
| Days on Market | 30 |
| Zoning | Zone 12 |
| Condo Fee | \$347 |

DATA IS DEEMED RELIABLE BUT IS NOT GUARANTEED ACCURATE BY THE REALTORS® ASSOCIATION OF EDMONTON. COPYRIGHT 2025 BY THE REALTORS® ASSOCIATION OF EDMONTON. ALL RIGHTS RESERVED. Trademarks are owned or controlled by the Canadian Real Estate Association (CREA) and identify real estate professionals who are members of CREA (REALTOR®, REALTORS®) and/or the quality of services they provide (MLS®, Multiple Listing Service®)

Listing information last updated on July 1st, 2025 at 7:17am MDT