

## \$478,800 - 768 Lee Ridge Road, Edmonton

MLS® #E4438792

**\$478,800**

3 Bedroom, 2.50 Bathroom, 1,836 sqft

Single Family on 0.00 Acres

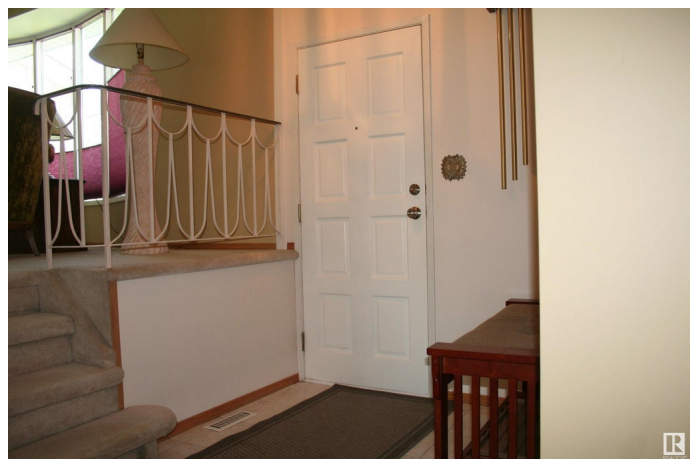
Lee Ridge, Edmonton, AB

Beautiful four level split situated in Lee Ridge. This home has been meticulously maintained and is ready for a new family to enjoy this peaceful setting. Three bedrooms up with three piece ensuite and four piece main bath. Enjoy the evening sunsets from the upper patio off the master bedroom. The two main floor areas include a living and dining room large kitchen area with gas stove and breakfast nook area. Large family room with gas fireplace laundry and two piece bathroom. The lower level is developed with a recreation room cold storage room an large mechanical storage area. Peaceful rear yard area with pergola for shade from the southern exposure

Built in 1973

### Essential Information

MLS® #	E4438792
Price	\$478,800
Bedrooms	3
Bathrooms	2.50
Full Baths	2
Half Baths	1
Square Footage	1,836
Acres	0.00
Year Built	1973
Type	Single Family



Sub-Type	Detached Single Family
Style	4 Level Split
Status	Active

### Community Information

Address	768 Lee Ridge Road
Area	Edmonton
Subdivision	Lee Ridge
City	Edmonton
County	ALBERTA
Province	AB
Postal Code	T6K 0P7

### Amenities

Amenities	Closet Organizers, Detectors Smoke, No Animal Home, No Smoking Home
Parking	Over Sized, Single Garage Attached

### Interior

Interior Features	ensuite bathroom
Appliances	Dishwasher-Built-In, Dryer, Garage Opener, Microwave Hood Fan, Refrigerator, Storage Shed, Stove-Gas, Vacuum System Attachments, Washer, Window Coverings
Heating	Forced Air-2, Natural Gas
Stories	4
Has Basement	Yes
Basement	Full, Partially Finished

### Exterior

Exterior	Wood, Stucco
Exterior Features	Fenced, Flat Site, Landscaped, Playground Nearby, Public Transportation, Schools, Shopping Nearby
Roof	Asphalt Shingles
Construction	Wood, Stucco
Foundation	Concrete Perimeter

### Additional Information

Date Listed	May 27th, 2025
Days on Market	77
Zoning	Zone 29

DATA IS DEEMED RELIABLE BUT IS NOT GUARANTEED ACCURATE BY THE REALTORS® ASSOCIATION OF EDMONTON. COPYRIGHT 2025 BY THE REALTORS® ASSOCIATION OF EDMONTON. ALL RIGHTS RESERVED.Trademarks are owned or controlled by the Canadian Real Estate Association (CREA) and identify real estate professionals who are members of CREA (REALTOR®, REALTORS®) and/or the quality of services they provide (MLS®, Multiple Listing Service®)

Listing information last updated on August 12th, 2025 at 8:17pm MDT