

\$529,900 - 3613 2 Street Nw, Edmonton

MLS® #E4438441

\$529,900

3 Bedroom, 2.50 Bathroom, 1,811 sqft

Single Family on 0.00 Acres

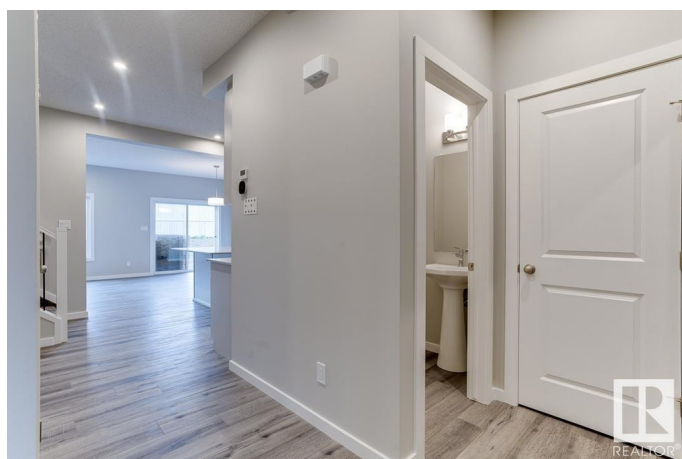
Maple Crest, Edmonton, AB

Welcome to 3 Bed room + BONUS ROOM house in the desirable community of Maple Crest. It consists of a bright & open main floor featuring open concept living room, Kitchen, dinning area & 2 pc bathroom. Kitchen boasts beautiful QUARTZ counters, HUGE ISLAND with under mount sink, STAINLESS STEEL appliances & a huge WALK-IN PANTRY. Upstairs consists of a great size Bonus room, Master Bedroom with 5 pc en-suite & walk in closet. 2 additional bedrooms with 4 pc Bathroom & Laundry. Double Front Garage with Large drive way and lots of street parking. A must see beautiful house, waiting to be yours.

Built in 2022

Essential Information

MLS® #	E4438441
Price	\$529,900
Bedrooms	3
Bathrooms	2.50
Full Baths	2
Half Baths	1
Square Footage	1,811
Acres	0.00
Year Built	2022
Type	Single Family



Sub-Type	Detached Single Family
Style	2 Storey
Status	Active

Community Information

Address	3613 2 Street Nw
Area	Edmonton
Subdivision	Maple Crest
City	Edmonton
County	ALBERTA
Province	AB
Postal Code	T6T 2P9

Amenities

Amenities	Detectors Smoke, No Animal Home, No Smoking Home
Parking	Double Garage Attached

Interior

Interior Features	ensuite bathroom
Appliances	Dishwasher-Built-In, Dryer, Garage Control, Microwave Hood Fan, Refrigerator, Stove-Electric, Washer, Window Coverings
Heating	Forced Air-1, Natural Gas
Stories	2
Has Basement	Yes
Basement	Full, Unfinished

Exterior

Exterior	Wood, Stone, Vinyl
Exterior Features	Airport Nearby, No Back Lane, Playground Nearby
Roof	Asphalt Shingles
Construction	Wood, Stone, Vinyl
Foundation	Concrete Perimeter

Additional Information

Date Listed	May 24th, 2025
Days on Market	25
Zoning	Zone 30

DATA IS DEEMED RELIABLE BUT IS NOT GUARANTEED ACCURATE BY THE REALTORS® ASSOCIATION OF EDMONTON. COPYRIGHT 2025 BY THE REALTORS® ASSOCIATION OF EDMONTON. ALL RIGHTS RESERVED. Trademarks are owned or controlled by the Canadian Real Estate Association (CREA) and identify real

estate professionals who are members of CREA (REALTOR®®, REALTORS®®) and/or the quality of services they provide (MLS®®, Multiple Listing Service®®)

Listing information last updated on June 18th, 2025 at 7:47am MDT