

## \$230,000 - 908 9715 110 Street, Edmonton

MLS® #E4437328

**\$230,000**

2 Bedroom, 2.00 Bathroom, 803 sqft

Condo / Townhouse on 0.00 Acres

WÃ@hkwÃªntÃ´win, Edmonton, AB

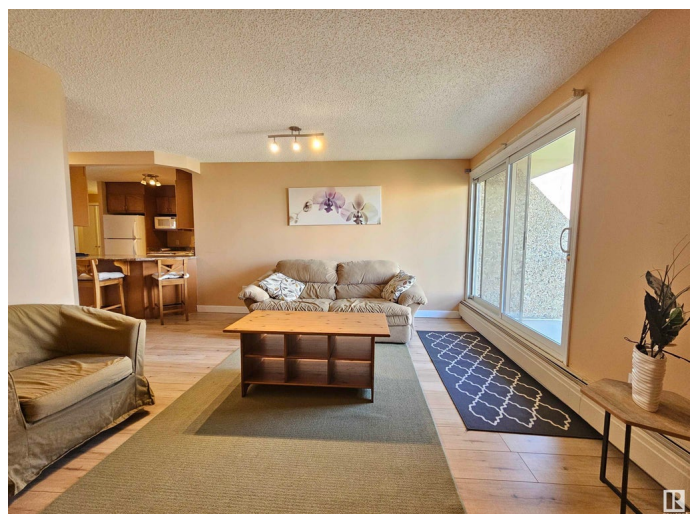
Great location! Steps to Grandin LRT Station and the River Valley. Quick and easy access to Downtown shopping, schools, and U of A. 803 sq. ft. lovely two bedrooms and two baths condo unit with convenient insuite laundry and storage room. Bright and open living room and dining room. Patio door access to the West facing balcony with great view. Spacious U-shaped kitchen with extended eating bar and ample cabinets. Primary bedroom has 3 pcs. ensuite. Condo fees include all utilities. One assigned underground parking stall.

Built in 1980

### Essential Information

MLS® #	E4437328
Price	\$230,000
Bedrooms	2
Bathrooms	2.00
Full Baths	2
Square Footage	803
Acres	0.00
Year Built	1980
Type	Condo / Townhouse
Sub-Type	Apartment High Rise
Style	Single Level Apartment
Status	Active

### Community Information



Address	908 9715 110 Street
Area	Edmonton
Subdivision	W&hkw&nt&win
City	Edmonton
County	ALBERTA
Province	AB
Postal Code	T5K 2M1

### Amenities

Amenities	Secured Parking, Security Door, Storage-In-Suite
Parking	Underground

### Interior

Interior Features	ensuite bathroom
Appliances	Dishwasher-Built-In, Dryer, Hood Fan, Refrigerator, Stove-Electric, Washer, Window Coverings
Heating	Hot Water, Natural Gas
# of Stories	14
Stories	1
Has Basement	Yes
Basement	None, No Basement

### Exterior

Exterior	Concrete
Exterior Features	Golf Nearby, Public Transportation, Schools, Shopping Nearby
Roof	Tar & Gravel
Construction	Concrete
Foundation	Concrete Perimeter

### Additional Information

Date Listed	May 19th, 2025
Days on Market	86
Zoning	Zone 12
Condo Fee	\$804

DATA IS DEEMED RELIABLE BUT IS NOT GUARANTEED ACCURATE BY THE REALTORS® ASSOCIATION OF EDMONTON. COPYRIGHT 2025 BY THE REALTORS® ASSOCIATION OF EDMONTON. ALL RIGHTS RESERVED. Trademarks are owned or controlled by the Canadian Real Estate Association (CREA) and identify real estate professionals who are members of CREA (REALTOR®, REALTORS®) and/or the quality of services they provide (MLS®, Multiple Listing Service®)

Listing information last updated on August 12th, 2025 at 11:32pm MDT