

Courtesy Of Kimberly A Graham Of RE/MAX River City

\$149,900 - 1105 9916 113 Street, Edmonton

MLS® #E4432137

\$149,900

2 Bedroom, 2.00 Bathroom, 852 sqft
Condo / Townhouse on 0.00 Acres

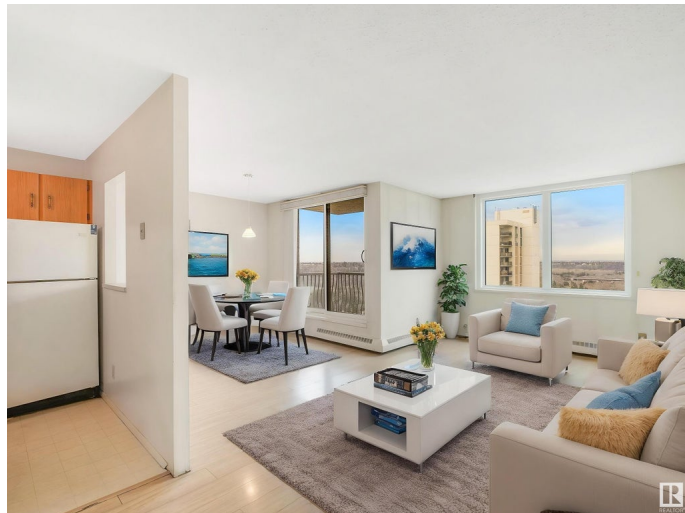
W&hkw&ant&win, Edmonton, AB

Seeking: New owner to love this condo! Must appreciate breathtaking river valley views, stylish buildings & active lifestyle communities. This charming 11th floor suite in W&hkw&ant&win (formerly Oliver) features 2 beds, 2 full baths, in-suite laundry, storage & a heated underground parking stall. Are you open to long walks in the River Valley, romantic dinners at nearby trendy restaurant & convenient commutes via LRT? Enjoy a secure building with access to all of the above! Did we also mention we have an on-site car wash & secure bicycle storage? Bonus points if you love being close to downtown, U of A, MacEwan, NAIT & great shopping. This low-maintenance, high-style corner unit is ideal for people wanting to design their own space for a great price & take advantage of those south west views. Condo fees include heat & water & visitor parking also on site!

Built in 1981

Essential Information

MLS® #	E4432137
Price	\$149,900
Bedrooms	2
Bathrooms	2.00
Full Baths	2
Square Footage	852



Acres	0.00
Year Built	1981
Type	Condo / Townhouse
Sub-Type	Apartment High Rise
Style	Single Level Apartment
Status	Active

Community Information

Address	1105 9916 113 Street
Area	Edmonton
Subdivision	WÃ©hkwÃ©ntÃ©win
City	Edmonton
County	ALBERTA
Province	AB
Postal Code	T5K 2N3

Amenities

Amenities	Off Street Parking, On Street Parking, Car Wash, Detectors Smoke, Intercom, Parking-Visitor, Party Room, Recreation Room/Centre, Secured Parking, Social Rooms, Storage-In-Suite
Parking	Underground

Interior

Interior Features	ensuite bathroom
Appliances	Dishwasher-Built-In, Dryer, Hood Fan, Refrigerator, Stove-Electric, Washer
Heating	Baseboard, Natural Gas
# of Stories	15
Stories	1
Has Basement	Yes
Basement	None, No Basement

Exterior

Exterior	Concrete, Brick
Exterior Features	Back Lane, Golf Nearby, Playground Nearby, River Valley View, Shopping Nearby, View City, View Downtown
Roof	Tar & Gravel
Construction	Concrete, Brick
Foundation	Slab

Additional Information

Date Listed	April 22nd, 2025
Days on Market	8
Zoning	Zone 12
Condo Fee	\$839

DATA IS DEEMED RELIABLE BUT IS NOT GUARANTEED ACCURATE BY THE REALTORS® ASSOCIATION OF EDMONTON. COPYRIGHT 2025 BY THE REALTORS® ASSOCIATION OF EDMONTON. ALL RIGHTS RESERVED. Trademarks are owned or controlled by the Canadian Real Estate Association (CREA) and identify real estate professionals who are members of CREA (REALTOR®, REALTORS®) and/or the quality of services they provide (MLS®, Multiple Listing Service®)

Listing information last updated on April 30th, 2025 at 7:32am MDT