

\$469,900 - 15408 67 Street, Edmonton

MLS® #E4431825

\$469,900

3 Bedroom, 3.00 Bathroom, 1,261 sqft

Single Family on 0.00 Acres

Ozerna, Edmonton, AB

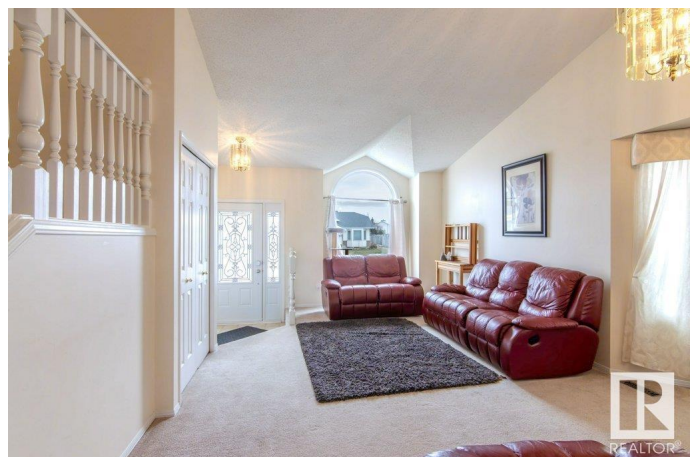
This beautiful bright 4 level split, with just over 1250sqft is situated on a quiet street in the North East community of Ozerna. This home features a total of 4 bedrooms & 3 full bathrooms & a Double Attached garage. The main floor has an open kitchen with large breakfast nook & a door leading to the deck & a nicely landscaped yard that hosts 2 apple trees, plus a charming living room & dining room on the main floor & plenty of large windows complete this level. The upper floor is complete with 3 bedrooms, the primary bedroom is spacious & includes dual closets & a 3 piece ensuite bathroom. The family room on the 3rd level comes with a gas fireplace, a wet bar, and a 4th bedroom. The newly renovated basement boasts a large rec room and laundry room. Upgrades include, a new front & back door and a new front window in the living room, Central A/C, new shingles, new furnace & new lino in the kitchen. This home has a very functional layout for any size family. Close to parks, schools, and all amenities.

Built in 1988

Essential Information

MLS® # E4431825

Price \$469,900



Bedrooms	3
Bathrooms	3.00
Full Baths	3
Square Footage	1,261
Acres	0.00
Year Built	1988
Type	Single Family
Sub-Type	Detached Single Family
Style	4 Level Split
Status	Active

Community Information

Address	15408 67 Street
Area	Edmonton
Subdivision	Ozerna
City	Edmonton
County	ALBERTA
Province	AB
Postal Code	T5Z 2W8

Amenities

Amenities	Air Conditioner, Deck, Wet Bar
Parking	Double Garage Attached

Interior

Interior Features	ensuite bathroom
Appliances	Dishwasher-Built-In, Dryer, Garage Control, Garage Opener, Stove-Gas, Washer, Window Coverings, Refrigerators-Two, TV Wall Mount
Heating	Forced Air-1, Natural Gas
Fireplace	Yes
Fireplaces	Tile Surround
Stories	4
Has Basement	Yes
Basement	Full, Finished

Exterior

Exterior	Wood, Vinyl
Exterior Features	Corner Lot, No Back Lane, No Through Road, Playground Nearby, Schools, Shopping Nearby

Roof	Asphalt Shingles
Construction	Wood, Vinyl
Foundation	Concrete Perimeter

Additional Information

Date Listed	April 19th, 2025
Days on Market	11
Zoning	Zone 28

DATA IS DEEMED RELIABLE BUT IS NOT GUARANTEED ACCURATE BY THE REALTORS® ASSOCIATION OF EDMONTON. COPYRIGHT 2025 BY THE REALTORS® ASSOCIATION OF EDMONTON. ALL RIGHTS RESERVED.Trademarks are owned or controlled by the Canadian Real Estate Association (CREA) and identify real estate professionals who are members of CREA (REALTOR®, REALTORS®) and/or the quality of services they provide (MLS®, Multiple Listing Service®)

Listing information last updated on April 30th, 2025 at 5:02am MDT