

# \$569,900 - 1915 120 Street, Edmonton

MLS® #E4430184

**\$569,900**

3 Bedroom, 2.50 Bathroom, 2,076 sqft  
Single Family on 0.00 Acres

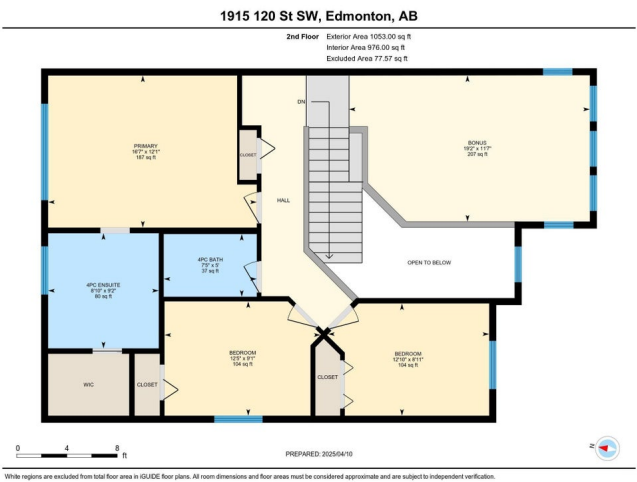
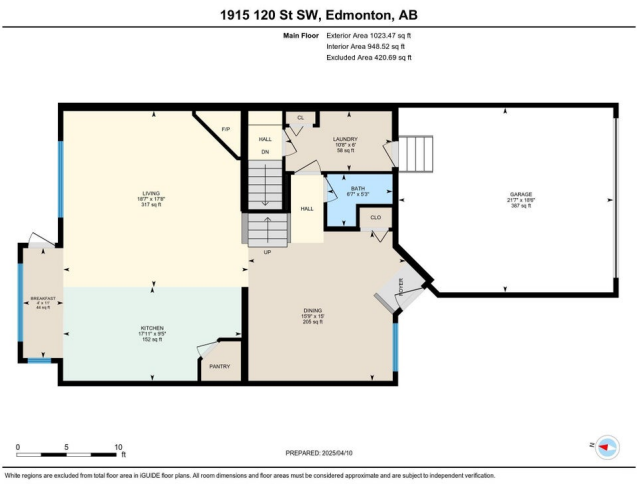
Rutherford (Edmonton), Edmonton, AB

This well-maintained 2-story home in the desirable Rutherford community of South Edmonton, situated on a quiet street, boasts 2076 sqft above-grade living space, features 3 bedrooms, 2.5 baths, and a double attached garage. Soaring vaulted ceiling in the foyer welcomes you into the home. A spacious entryway leads to the bright dining room. Rich hardwood flooring flows throughout the main floor. Open concept floor plan gives direct access to the kitchen featuring a load of maple cabinetry, a built-in desk, and a corner pantry. The living room opens up to a southeast-facing backyard and deck-- perfect for entertainment. A 2-pc bath completes the main floor. Upstairs, you'll find a bonus room with built-in bookshelves, 3 spacious bedrooms and a 4-pc shared bath, with the primary bedroom featuring a walk-in closet and a 4-pc ensuite. Unfinished basement with tons of potential. Close to schools, shopping, and all amenities, with quick access to the Henday.

Built in 2005

## Essential Information

|           |           |
|-----------|-----------|
| MLS® #    | E4430184  |
| Price     | \$569,900 |
| Bedrooms  | 3         |
| Bathrooms | 2.50      |



|                |                        |
|----------------|------------------------|
| Full Baths     | 2                      |
| Half Baths     | 1                      |
| Square Footage | 2,076                  |
| Acres          | 0.00                   |
| Year Built     | 2005                   |
| Type           | Single Family          |
| Sub-Type       | Detached Single Family |
| Style          | 2 Storey               |
| Status         | Active                 |

### Community Information

|             |                       |
|-------------|-----------------------|
| Address     | 1915 120 Street       |
| Area        | Edmonton              |
| Subdivision | Rutherford (Edmonton) |
| City        | Edmonton              |
| County      | ALBERTA               |
| Province    | AB                    |
| Postal Code | T6W 0A9               |

### Amenities

|           |                        |
|-----------|------------------------|
| Amenities | Deck, Detectors Smoke  |
| Parking   | Double Garage Attached |

### Interior

|                   |  |
|-------------------|--|
| Interior Features | ensuite bathroom   |
| Appliances        | Dishwasher-Built-In, Dryer, Hood Fan, Refrigerator, Stove-Electric, Washer, Window Coverings |
| Heating           | Forced Air-1, Natural Gas  |
| Stories           | 2  |
| Has Basement      | Yes  |
| Basement          | Full, Unfinished   |

### Exterior

|                   |   |
|-------------------|---|
| Exterior          | Wood, Vinyl   |
| Exterior Features | Back Lane, Fenced, Landscaped, Playground Nearby, Public Transportation, Schools, Shopping Nearby |
| Roof              | Asphalt Shingles  |
| Construction      | Wood, Vinyl   |
| Foundation        | Concrete Perimeter  |

**Additional Information**

Date Listed            April 10th, 2025  
Days on Market      22  
Zoning                Zone 55

DATA IS DEEMED RELIABLE BUT IS NOT GUARANTEED ACCURATE BY THE REALTORS® ASSOCIATION OF EDMONTON. COPYRIGHT 2025 BY THE REALTORS® ASSOCIATION OF EDMONTON. ALL RIGHTS RESERVED.Trademarks are owned or controlled by the Canadian Real Estate Association (CREA) and identify real estate professionals who are members of CREA (REALTOR®, REALTORS®) and/or the quality of services they provide (MLS®, Multiple Listing Service®)  
Listing information last updated on May 2nd, 2025 at 3:32am MDT